



In this issue:

- 2 New Residents
- 3 Pet Policy at Brewster
At the Movies
- 4 Brewster Place Library
News
2010 Resident Council
Officers and
Committee Chairs
- 5 Chaplain's Corner
Page one cont.
- 6 WellnessWise
Osher: Hawthorne
- 7 Estate Planning
Remembering
Ed Gibbons
- 8 American Indian
Exhibit at the Nelson-
Atkins Museum
Photos



Did you know...

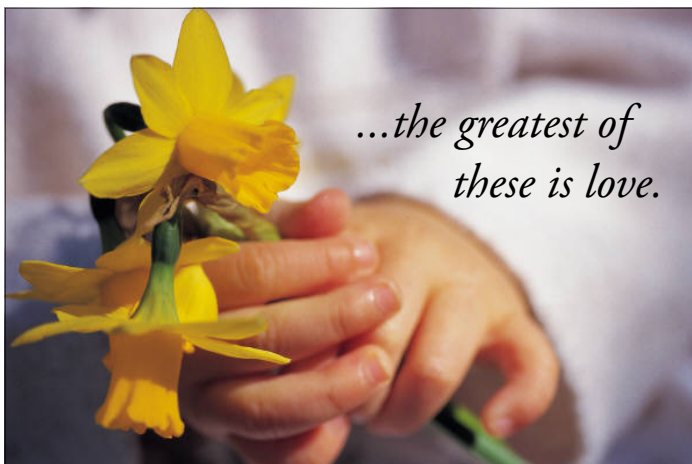
The Vancouver 2010 Winter Olympics will host over 80 countries with 1.8 million tickets available for events. The opening and closing ceremonies will for the first time be held inside a stadium with a solid roof. The security budget for the events is said to be \$900 million — five times higher than the original estimate. Go USA!

“We Don’t Forget a One, Not a Single One”

Dale Galloway from InspirationalStories.com shares this heartwarming tale with us this Valentine’s Day month:

Little Chad was a shy, quiet young boy. One day he came home and told his mother that he'd like to make a valentine for everyone in his class. Her heart sank. She thought, "I wish he wouldn't do that!" because she had watched the children when they walked home from school. Her Chad was always behind them. They laughed and hung on to each other and talked to each other. But Chad was never included. Nevertheless, she decided she would go along with her son. So she purchased the paper and glue and crayons. For three weeks, night after night, Chad painstakingly made 35 valentines.

Valentine's Day dawned, and Chad was beside himself with excitement. He carefully stacked them up, put them in a bag, and bolted out the door. His mother decided to bake him his favorite cookies and serve them nice and



warm with a cool glass of milk when he came home from school. She just knew he would be disappointed and maybe that would ease the pain a little. It hurt her to think that he wouldn't get many valentines - maybe none at all.

That afternoon she had the cookies and milk on the table. When she heard the children outside, she looked out the window. Sure enough, there they came, laughing and having the best time. And, as always, there was Chad in the rear. He walked a little faster than usual. She fully expected him to burst into tears as soon as he got inside. His arms were empty, she noticed, and when the door opened she choked back the tears.

"Mommy has some cookies and milk for you," she said.

But he hardly heard her words. He just marched right on by, his face aglow, and all he could say was: "Not a one. Not a one."

Her heart sank.

And then he added, "I didn't forget a one, not a single one!"

Continued on page 5...

Welcome New Residents

by Mary Baker-Mills, Resident

Wayne and Barbara Fernkopf made Brewster East their new home on December 15, 2009. They accomplished their task of moving just in time to celebrate Christmas and the New Year. “Merry,” yes. “Happy” yes, as they look forward to this new life.

Wayne was born in Jackson County, on a farm near Holton. His family moved to Brown



County where he first went to school. Next, he adjusted well to a second move and a second school, this time in Donovan County. His final move when he was in the 3rd

grade. His family moved back to Circleville where he remained until his high school graduation.

After high school Wayne enlisted in the army. He served at Fort Belvoir in Virginia from 1946 to 1948. He said the best opportunity he ever had was the G.I. Bill which enabled him to attend and graduate from Kansas State University. He graduated with a teaching degree and a profession that gave him satisfaction and security throughout his life. His first job in a classroom was at Axtell, Kansas where he taught for five years. After that he went back to Kansas State, earned his Masters Degree, and was able to teach in the Topeka School System for the next 30 years.

Barbara was born in Newton, but was raised in Larned where she graduated high school before attending Kansas State. How did Barbara come into Wayne’s life? They met while he was at Kansas State. Barbara was both a bookkeeper and student, and Barbara’s roommate knew Wayne.

Her roommate owned a yellow convertible. One fall evening Barbara and her roommate took a drive around the town when a car full of boys saw them, caught up with them and followed that yellow convertible until they pulled into a parking lot.

Everyone got out of their cars and started talking. The very next weekend, Wayne called Barbara for their first date. It was one year later, October 8, 1950 when Barbara became Mrs. Fernkopf. They lived in Manhattan. Barbara still had two years to go to get her diploma and she worked in the Personnel Office prior to her job as the bookkeeper. She held that job until Wayne graduated. They moved to Axtell where he taught English. Before being accepted there, the Superintendent of the Axtell Schools wanted to interview Wayne and asked to have Barbara present. It so happened that the Superintendent’s wife grew up in the same town as Barbara and the girls attended the same school. What a surprise!

In 1956 Barbara and Wayne became parents, and Barbara became a stay-at-home-mom. Their daughter, Kam, now lives in Plant City, Florida. Kam and her husband spent four years in England where he served in the Air Force. Kam and her husband have a son, Corey, and a daughter, Crystal. Corey has made Barbara and Wayne great grandparents, and his name is, Jaden. When Kam and her husband were stationed in England, Barbara and Wayne took three trips to visit them and to tour England. They drove through Great Britain and Scotland from top to bottom, clear to Cornwall. Barbara says “these trips bring up our best memories.”

In 1959 their son Kelsey was born. He now lives in Seattle. Both children were born after Wayne and Barbara moved to Topeka. When Kelsey was in High School, Barbara worked at the Meat and Cheese Shop in Gage Center. Wayne and Barbara also loved to travel throughout their own homeland. They drove and drove, north and south, east and west, always driving on the smaller roads, seldom on interstate highways.

They bring happy memories to Brewster. May they always keep their happy smiles. Welcome to our neighborhood Wayne and Barbara. We are pleased to have you. ■

Wayne and Barbara Fernkopf
900 SW 31st St., Apt. 204
Ph. 272-1758

Pets Are *Welcome* at Brewster Place

Updated Pet Policy and Guidelines

Pets can be a very important part of our lives. Even those of us who do not own pets understand the companionship and comfort pets give to their owners. Recognizing this, Brewster Place encourages and supports those residents who choose to have pets. Along with ownership come responsibilities that are especially relevant in a communal living environment such as Brewster Place. Guidelines have been established by the Brewster Place Pet Policy so that everyone understands what their responsibilities are.



must have a current city license for any pet under your care and that you must provide to Brewster Place proof of liability insurance for that pet. To obtain the city license you must show proof of rabies vaccination, but you will only have to show the city license to Rhonda at the main office. Many veterinarians recommend more extensive array of vaccinations, but Brewster Place feels it is the pet owner's choice to follow their veterinarian's recommendations. The second change in policy

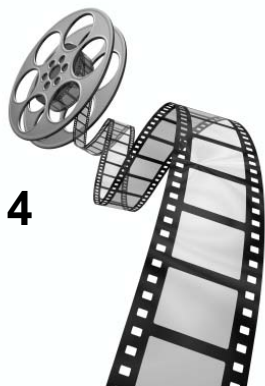
is that owners must show proof of insurance. Although having liability insurance for their pet has always been recommended by Brewster Place, owners now have to show proof of that insurance. This type of insurance is most likely found through your renter's insurance.

You might take this opportunity to review the pet policy as found in your Resident Handbook. If you have not already done so, please bring the proof of city license and proof of liability insurance to the main office at your earliest convenience. Pets are both a joy and a responsibility. Please do your part as a pet owner to ensure that your pet is indeed a delight both to you and those who live around you. ■

All pets must have the approval of administration to be on campus. This applies to both pets that reside permanently with a resident as well as *any* visiting pets. This has always been policy and has not changed from the original guidelines. Furthermore, pets are to be under the control of a responsible adult whenever they are on Brewster Place premises. All dogs must be on a leash whenever they are outside of the associated residents' home. This is for the safety of the pet as well as visitors and residents on our campus. Please ensure that you clean up any deposits your pet makes on the grounds (there are several stations with disposable bags placed just for this purpose).

Two important changes have occurred regarding the Pet Policy. The two changes are that you

**At the
Movies
on BPTV 14**
Thursdays
2:00 pm



Thursday, February 4
"Angels & Demons" (2009 drama)

Thursday February 11
"Flash of Genius" (2008 drama)

Thursday, February 18
"The National Parks: America's Best Idea"
Episode One: The Scripture of Nature
(2009 Ken Burns documentary)

Thursday, February 25
"The Apartment" (1960 romantic comedy)

Brewster Place Library Update

The Brewster Place Library located in the Klinge Activity Center (lower level of the Main Building) has a fairly large supply of books, all shelved in reasonable order and ready for you to enjoy at any time. Books are grouped in identified sections for your ease in selection. Large print books are placed together in alphabetical order by author, or by the subject's name if it is biographical.

The check out system using cards has been discontinued except for the valuable, classic

movie collection donated to Brewster Place by Gale Gregg. We know folks are checking these movies out and enjoying them, but we are still missing a few titles. Missing from the collection are:

- #1 Citizen Kane
- #34 To Kill a Mockingbird
- #51 Philadelphia Story
- #72 Ben-Hur
- #74 The Gold Rush
- #96 The Searchers

Please return all items by placing them on the desk in the

Library. We hope to soon have a cart for this purpose. When leaving the Library, please do not move the light switches, as the area has motion sensitive lighting—the lights will go off and on automatically as people enter and leave the room. We hope you find pleasure in using your library.

If you have questions about the Library or its contents, please contact:

- Freida Schriener, Volunteer Library Chair at 345-8352
- Ruth Jacobsen at 266-3797
- Jean Lamb at 272-2298 ■

2010 Brewster Place Resident Council Officers and Committee Chairs

Officers

President	Mary Mills	234-8714
1st Vice President	Bill Larson	274-5387
2nd Vice President	Nadine Manley	272-0532
Secretary	B Horne	267-0911
Past President	Max Bennett	271-8755

Committee Chairs

Food Service	Ann Conley	272-9101
Grounds and Gardens	Bob Parman	266-2671
Historian	Phyllis McMahan	272-0680
Library	Freida Schriener	354-8352
Recycling	Bob Sparling	266-9887
Security/Safety	Max Bennett	271-8755
Service Activities	Jack Barron	267-1848
Social Activities	Jean Lamb	272-2298
Spiritual Life	Lloyd Muilenburg	478-4940
Volunteers	Bobbie Smelter	267-7626
Welcome New Residents	Irma Johnson	274-5363

Shepherd's Center of Topeka Faith-Based Ministry for Adults 55 and Older

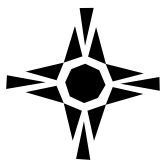


Shepherd's Center of Topeka is a nonprofit ministry established to meet the mental, physical and spiritual needs of aging adults. We are open to anyone 55 and older, of all faiths, or having no religion, in a quest to bring fellowship to others.

Shepherd's Center of Topeka is sponsored by 28 congregations and 11 community partners, including Brewster Place. Sessions are held each Friday, beginning at 8:30 am with a healthy gym walk or exercise class, followed by classes at 9:15 am and 10:30 am. Lunch is served at 12:15 pm. The cost is \$25 per session where you can enjoy a fitness option, eight different classes, four musical performances and four catered meals.

For more information about registration please call 267-0248. All sessions meet at First Baptist Church. Brewster Place provides transportation leaving at 8:30 am each Friday in February from the lobbies of the Main Building and Brewster East. ■

For more information about Brewster Place or to arrange a personal tour, call Phyllis Lansford at 274-3350.



From Chaplain Larry

“Dear friends, since God so loved us, we ought to love one another.” (1 John 4:11)

Remember those childhood days when we exchanged valentines? Maybe we gave one to that special boy or girl when we learned about “puppy love.” However, as we grow older, expressing love remains important whether we are the giver or receiver. I enjoy reading what kids think about the subject of love. Allow me to share how children, aged five to ten answered questions about love.

- “If falling in love is anything like learning how to spell, I don’t want to do it. It takes too long”.
- “Love is like an avalanche where you have to run for your life.”
- “I’m not rushing into being in love. The fourth grade is hard enough.”
- “It has something to do with how you smell. That’s why perfume and deodorant are so popular.”
- “It gives me a headache to think about that stuff.”
- “I’m just a kid, I don’t need that kind of trouble.”
- “Love is when mommy gives daddy the best piece of chicken.”
- “I’ve been trying to hide from love since I was five, but the girls keep finding me.”
- “I think you are supposed to get shot with an arrow or something.”
- “Once I’m done with kindergarten, I’m going to find me a wife.”
- “Love is foolish, but I might try it sometime.”
- “Love is when you kiss all the time. Mom and dad look gross when they kiss.”
- “A girl puts on perfume, a boy puts on cologne then go out and smell each other.”
- “There are two kinds of love—our love for God and God’s love. But God makes both kinds of them. Love is important to God.”

God’s love and my love to all of you!
Chaplain Larry ■

Continued from page 1...

The images these past few weeks from Haiti have been heart wrenching. The devastation and anguish, the despondence and upheaval. It’s almost as if we’ve seen these faces and places before. We just called them by different names: the Asian Tsunami, Katrina, Greensburg. It almost forces us to turn away from the television screen and give up hope.

And yet, we don’t. Working through our faith communities, our service organizations, our families and friends, we find ways to reach out. For some, it’s a contribution of money, for others an offered-up prayer. No matter the way in which we respond, it’s always with this simple – yet powerful – thought in mind: “I don’t want to forget a one. Not a single one.” Our prayers and our contributions are given with that notion in mind.

Of course, we see that maxim every day at Brewster Place. We see it in a smile on a server’s face in the dining room or the gentle touch of a Kaizen on the Eagle Ridge neighborhood. We hear it in the laughter of a Friday Night Social or the fervent prayer at Sunday afternoon Vespers.

Most of all, we feel it in that spirit that is Brewster Place. A place where our residents and our staff each and every day remind us: “I didn’t forget a one. Not a single one.” ■

In Memoriam

Ron Schmoller, executive director of Brewster Place from 1979-1994, recently passed away at the age of 73 in Florida. Ron was Brewster’s second executive director and oversaw many developments, including the construction of Brewster East and the initial planning of the Brewster Health Center. Please keep his family in your prayers.

Volunteer Today!

There are many volunteer opportunities at Brewster Place whether you are a resident, family member or friend of Brewster. Please call Jeanene Johnson at 274-3398 or Jo Sumpter at 274-3312 for more information.



Wellness Wise

February is Full of Wellness Opportunities!

Go RED Day

Friday, February 5

All Day!

Stand up and speak out against heart disease in women by wearing red. Choose to be a leader. Inspire friends and family to wear red and speak up about heart disease... the number one killer of women in our nation.

Chair Massages

Monday, February 8

2:00 pm—4:00 pm Main Lounge

Back by popular demand, free chair massages.

Drop by for a 10-minute massage compliments of Mary Lou Herring, Massage Therapy Student.



Fitness for the Brain

Thursday, February 11

2:00 pm MB PDR

This 45-minute presentation will discuss the latest in supplements and maintaining your brain health including games to train your brain. This free presentation is open to Brewster residents, Brewster at Home members and the community at large. Due to the popularity of this topic, a reservation is requested by calling DeAnn at 274-3393.

Balance Screening and Tips

Monday, February 15

2:00—3:00 pm MB PDR

Hosted by the Wellness and Rehab Departments
Drop by anytime between 2:00 and 3:00 pm in the Main Building, Private Dining Room. ■



Mission

The University of Kansas Osher Lifelong Learning Institute provides intellectually engaging and enriching classes and events solely for the joy of learning to diverse communities of lifelong learners, with a focus on those 50 years of age and older.

Hawthorne's Tales Today

Wednesdays, February 17, 24 and March 3

2:00—4:00 pm KAC

Although he wrote in the middle of the 19th century and his characters lived in circumstances alien to us, Nathaniel Hawthorne composed short stories whose underlying themes are current today. What assumptions do we make when all the facts are unavailable? Is it appropriate to control the lives of others—even for their protection? Will there be unforeseen consequences from trying to make things perfect for our loved ones and/or for ourselves? Expect lively discussion as we read: “The Minister’s Black Veil,” “The Birthmark” and “Rappaccini’s Daughter.”

never stop learning

Haskell Springer, Ph.D., KU Emeritus Professor of English, has taught at The University of Virginia, the Sorbonne, and as a Fulbright scholar in Rio de Janeiro. He received the CLAS 2005 Career Achievement Teaching Award.

Coming Soon...

The Dust Bowl Revisited

March 8, 15 and 22

Prisoners of War in Kansas During WW II

April 7, 14 and 21

If you are interested in attending a class or would like more information, please call Jeanene at 274-3398. ■

Brewster's Charitable Gift Annuity Program

For many elders, a conservative investment portfolio has been a hallmark of their financial planning. In part due to the stock market's ups and down, older adults have felt safer with a savings plan that often times concentrates on certificates of deposits.

Many CD investors – wanting a more generous return coupled with that important safety factor – look for alternatives when CDs come due. Combined with the fixed income that most elders live with, a Brewster Place Charitable Gift Annuity can be an excellent way to lock in a guaranteed income while also leaving a legacy with Brewster Place. A few questions and answers about the Brewster's program:

What is it?

The Brewster Foundation's Gift Annuity program allows you to make a gift to Brewster Place and receive both a lifetime income and a charitable income tax deduction. The income is paid annually (or semi-annually) for either one or two lives. A two life annuity will continue to pay in full until the death of the spouse.

What kind of gift must I make?

The Brewster Foundation will write an annuity for as little as \$5,000. However, for those gifts of \$10,000 or greater, more attractive interest rates apply. Your gift can be made with cash, stocks, bonds, or shares in a mutual fund.

How much income would I receive each year?

It depends on your age. The older you are, the higher the annuity rate. Once your annuity is set, the payments will not change for the life of the annuity. We normally use the rates of return recommended by the American Council on Gift Annuities.

How would the income be taxed?

If you use cash to make your gift, a large portion of each payment is usually tax-free; the rest of the payment will be taxable income. If you make your gift with stock or other appreciated property, each annuity payment will be a mix of tax-free income, ordinary income, and capital gain. We can provide you with a **no-obligation summary** of your projected rate and of how your annuity payments will be taxed for any size of gift annuity you would like to consider.

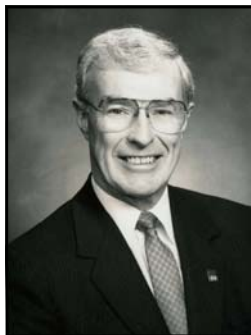
Are there other tax benefits?

When you create your gift annuity, you receive an immediate income tax charitable deduction. It is based on the fair market value of your gift. It varies with the annuity return and the age of the beneficiaries (as a general rule, older beneficiaries receive large charitable tax deductions). The gift may also save probate costs and estate taxes (since the property is no longer in your estate). If you make your gift with appreciated securities, you also spread out any capital gains over the life of the annuity, rather than pay it all at once.

Where can I receive more information?

Contact Mary Beth Saylor, Director of Foundation Development, at 274-3327 or visit with your financial advisor. ■

Remembering a Friend of Brewster



Ed Gibbons, immediate past chair of the Brewster Foundation, died January 19. Ed was a great supporter of Brewster Place and our mission; he was a friend to many of our residents. His work with the Capper Foundation and Sheltered Living made it possible for many of those in our community with developmental disabilities to live fuller, more dignified lives. We will miss him greatly. ■



On Nov. 11, 2009, The Nelson-Atkins Museum of Art unveiled a new suite of American Indian galleries honoring and giving new emphasis to the artistic achievement of Native peoples from across North America.

With more than 6,100 square feet, the three galleries are among the largest devoted to American Indian art in any comprehensive art museum in the world and quadruples the amount of space previously devoted to American Indian art at the Nelson-Atkins.

The American Indian collection encompasses important works from all North American culture areas, dating from pre-contact to the present, and includes pottery, basketry, quill and beadwork, textiles, painting and sculpture.

The diverse bodies of works in the collection include a number of objects recognized as masterpieces of their kind. A few of the most notable include a magnificent Cheyenne eagle feather war bonnet; a rare and important Chumash basket; one of the great shaman's frontlets collected from the Tlingit; and an exquisitely beaded Kiowa cradle attributed to Tahdo.

Please join Jeanene on **Thursday, January 18** for this terrific trip to Kansas City. The day will also include lunch at Rozzelle Court at the Museum. If time permits, we will find some shops to do a little browsing. Transportation is \$12 and lunch is Dutch treat. Please call Jeanene at 274-3398 for reservations. ■

At Brewster You Are Never Too Old to Learn and Grow...

Shepherd's Center of Topeka, KU Osher Lifelong Learning Institute, Great Decisions, Sheffel Lecture Series

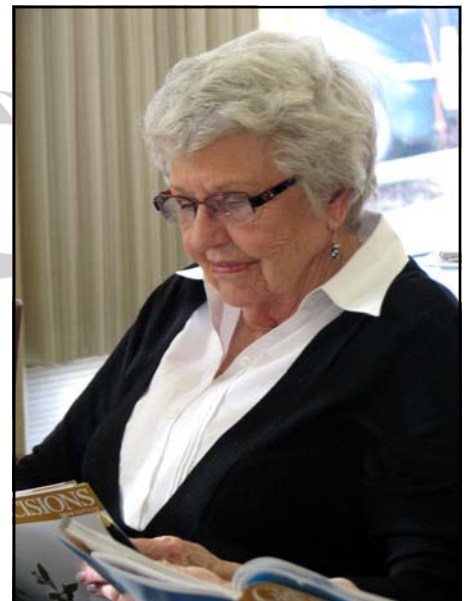


Above: Jack and Gloria Barron participate in the Great Decisions discussion group.



Great Decisions is a foreign policy discussion group. If you are interested in this group or any other programs at Brewster Place, please call Jeanene Johnson at 274-3398.

Below: New resident ML Davis joined Great Decisions and expressed her thoughts and opinions during the discussion. This group is led by residents and it is known for its lively debate.



get the most
out of life!



February remembrances...

Birthdays

Arthur Avery	1
Roberta Reeves	3
Dorothy Bennett	3
Nadine Manley	8
Richard Hodges	12
Jeannette Runyan	12
Elizabeth Shaffer	12
Arthur Curtis	13
Gordon Toedman	17
Lawrence Brock, III	18
Elmer Davis	18
Jack Barron	19
Edna Frazier	19
Warren Kraus	19
Marietta Armstrong	20
Earl Walker	20
Alice Eisele	21
Liz Kiene	22
Jim McHenry	22
Phyllis Allen	24
Connie Smith	25
Donald Roseberry	27
Gerry Dodge	28
Jean Holcomb	28
Dorothy Pooler	28
Patsy Walz	28
Jeannette Locke	29
Donna Low	29

Anniversaries

Jim and Betty McHenry	2-5-43
Gilbert and Audrey Singleton	2-5-47
R.T. and Nancy Wentling	2-11-52
Ed and Georgiana Morrill	2-15-49

New Residents

Chuck and Kathy Howard	BE 303
Anna Kapelle	MB 529
Mary Waxse	AL G8

Transfers

Frances Barber	MB 404
Nova Freeman	MB 201
Richard Ellison	MB 302
Toshi Roark	AL 30
Irv Sheffel	BHC

Staff Anniversaries

These Brewster staff members are celebrating their employment anniversaries in February! ■

Department	Office/Work Location	Years
Administration		
Brian Massek	MB	1
Larry Riggins	MB	11
Community Relations		
Phyllis Lansford	MB	11
Pat Shehi	MB	4
Dining Services		
Manuel Martinez	MB	7
Health Services Administration		
Nichole Potts	BHC	2
Health Services		
Kelly Johnson	BHC	3
Steven Casura	BHC	1
Cinnamon Walker	BHC	1
Sherry Greenly	BHC	1
Brenda Dyer	BHC	4
Sarah Robertson	BHC	2
Amber Barber	BHC	3
Tossa Taylor	BHC	5
Toni Nutt	BHC	1
Robin Williams	BHC	10
Grace Wamahiu	BHC	1
Tonya Blatt	BHC	6
Kay Holland	BHC	2
Debra Richmond	HH	12
Security/Transportation		
Nina Goss	Campus	1
Jerry Clubb	Campus	2
Maxine Gilbert	Campus	3
Lee Decker	Campus	4
LaTonya Helms	MB	1

In Memoriam

Mr. Daniel Koger	12-26-09
Mr. Oral "Jess" Roark	1-1-10
Mrs. Elizabeth "Liz" Hoover	1-12-10
Mr. Ed Gibbons	1-19-10
Former Chair, Brewster Foundation	
Mr. Ron Schmoller	
Former, Executive Director	
Passed away recently in Florida	